



true
STUDENT

FLOOR

PLANS



TRUE NOTTINGHAM

TABLE OF CONTENTS

FLOOR PLANS

	PAGE
Ground	4
Upper Ground	5
Level 1	6
Level 2	7
Level 3	8
Level 4	9
Level 5	10
Level 6	11
Level 7	12
Level 8	13
Level 9	14
Level 10	15
Level 11	16
Level 12	17

ROOM TYPES

APARTMENTS

Apartment	19
Superior Apartment	20

STUDIOS

Studio	22
Studio Plus	23
Superior Studio	24
Accessible Studio	25
Sky Studio	26
Sky Studio Plus	27
Sky Superior Studio	28



FLOOR PLANS

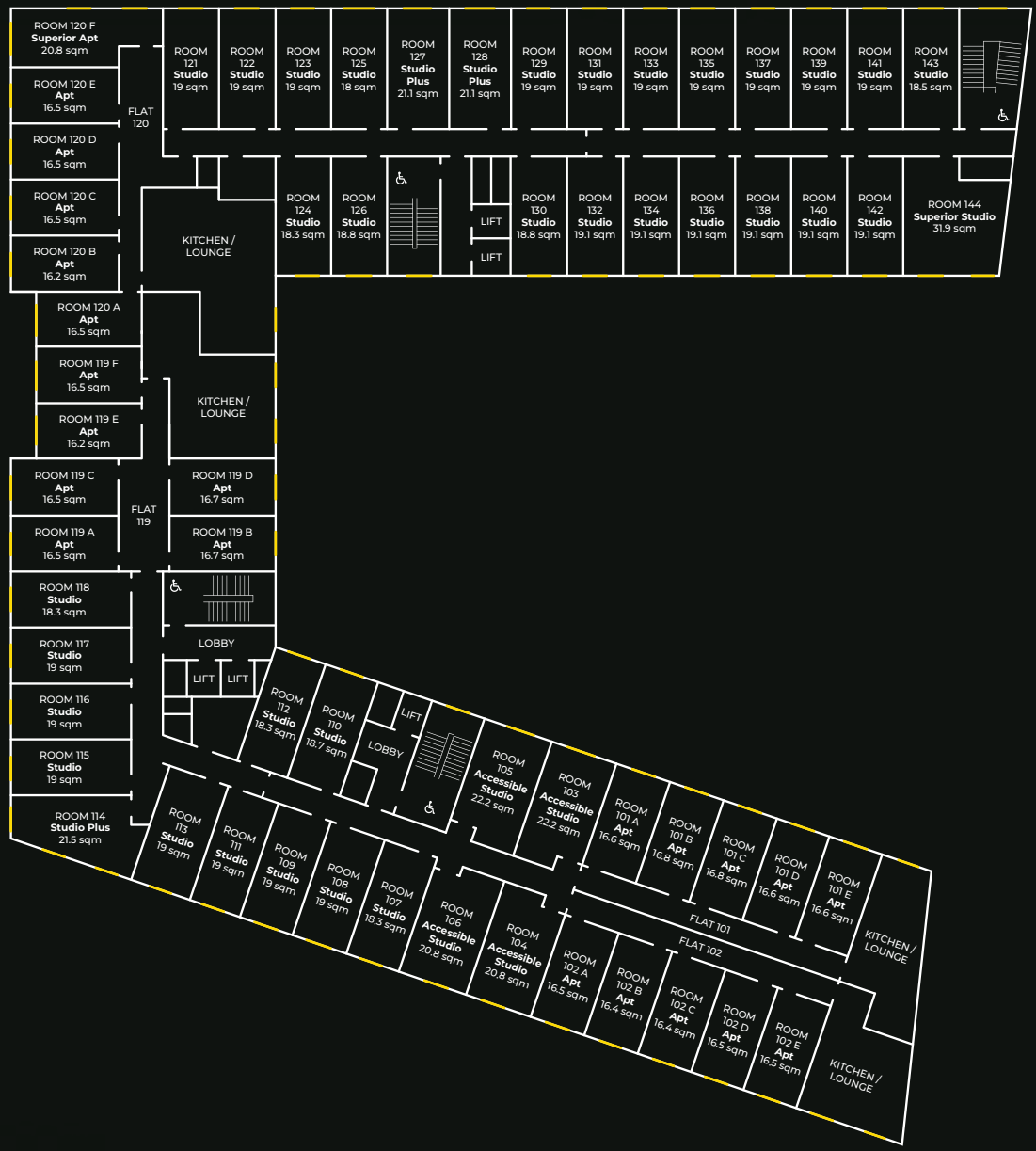
GROUND



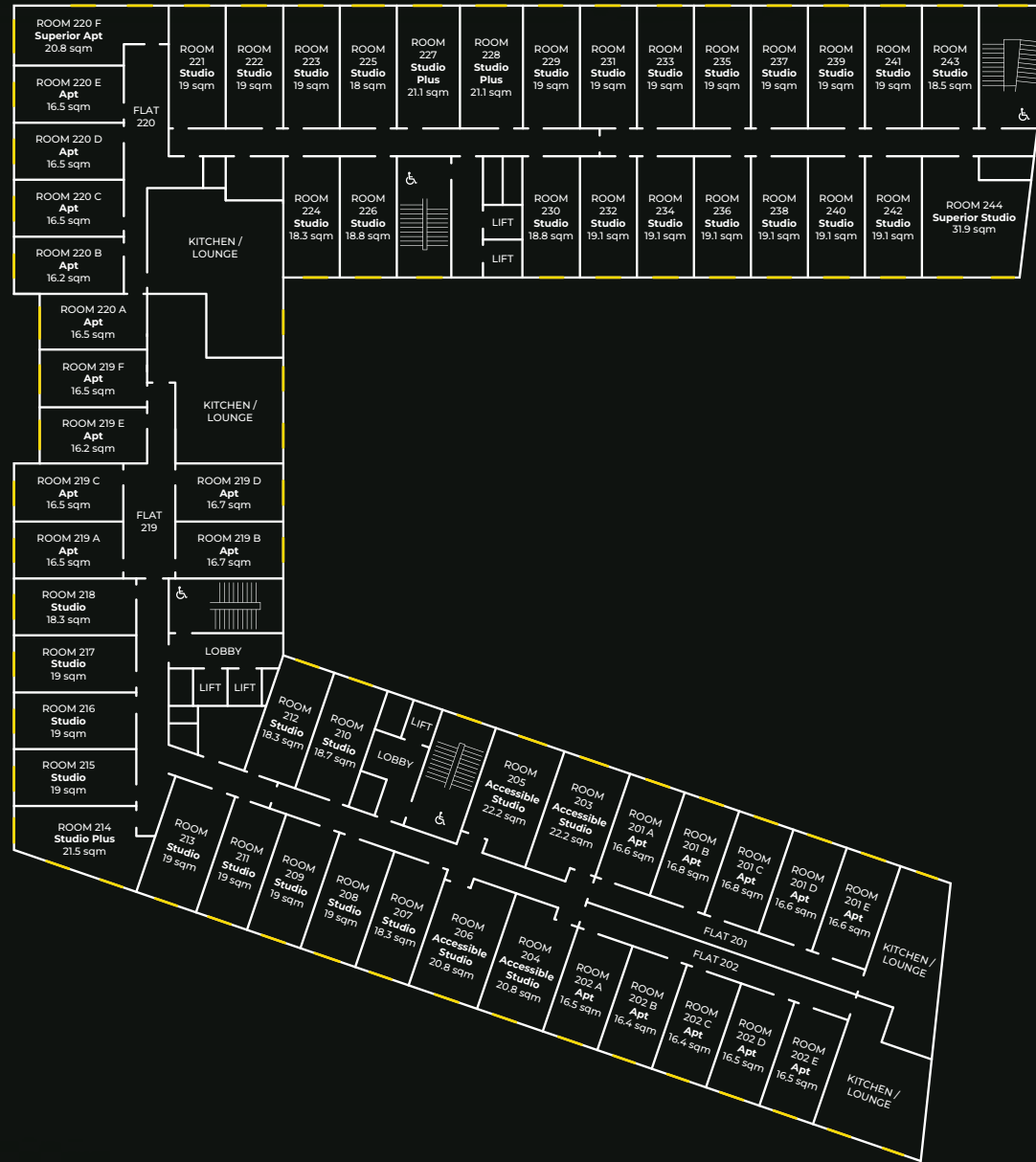
UPPER GROUND



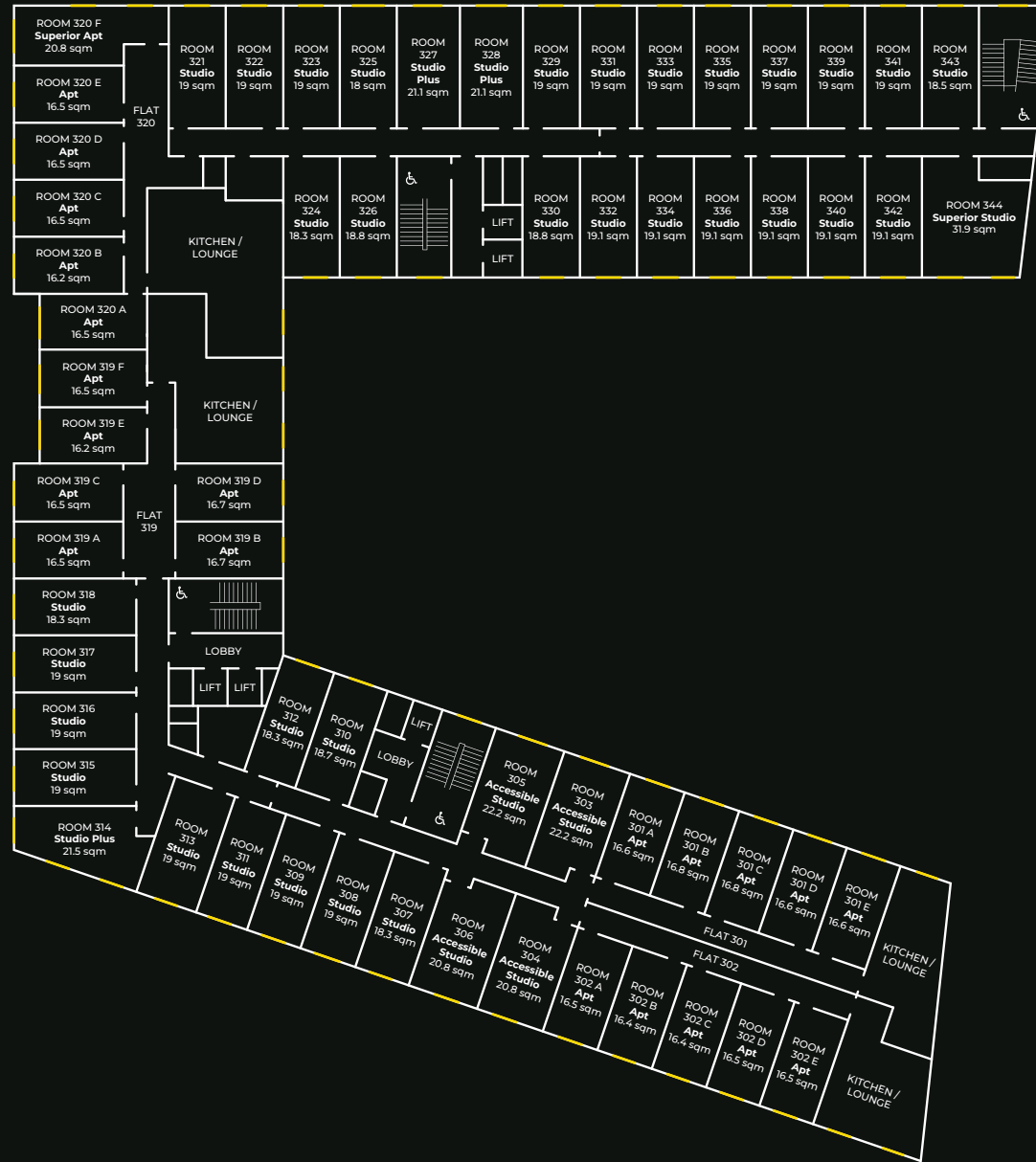
LEVEL 1



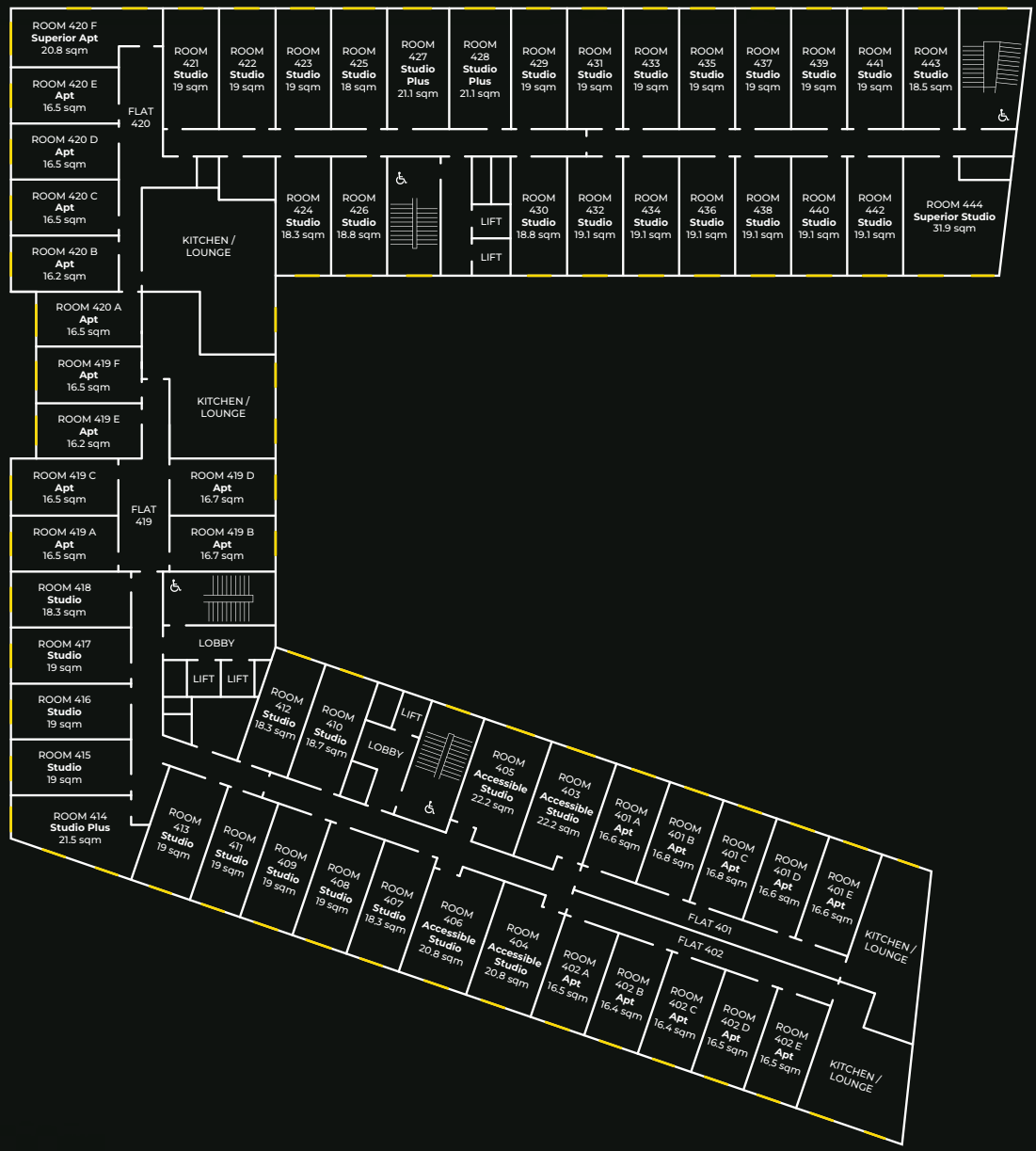
LEVEL 2



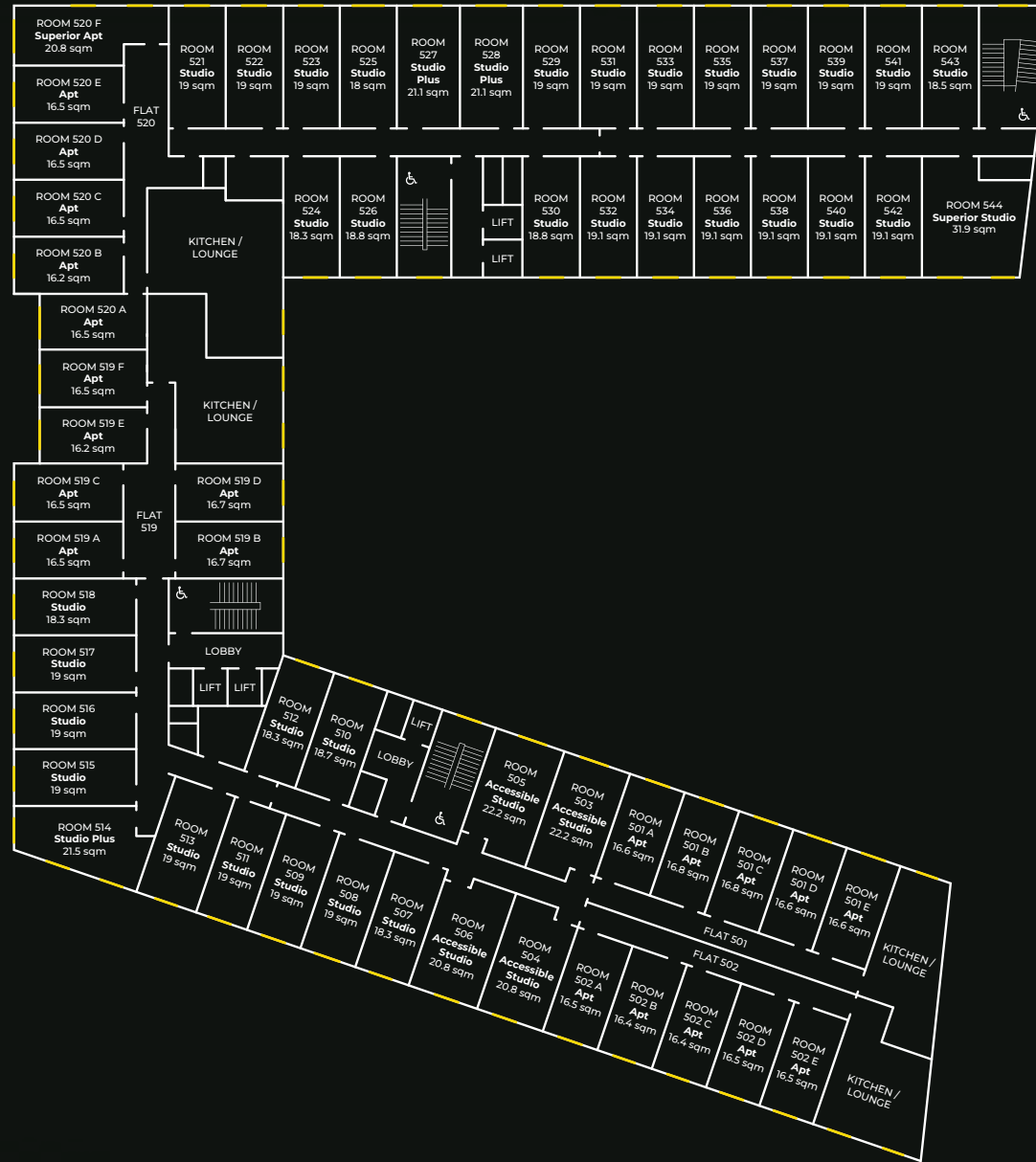
LEVEL 3



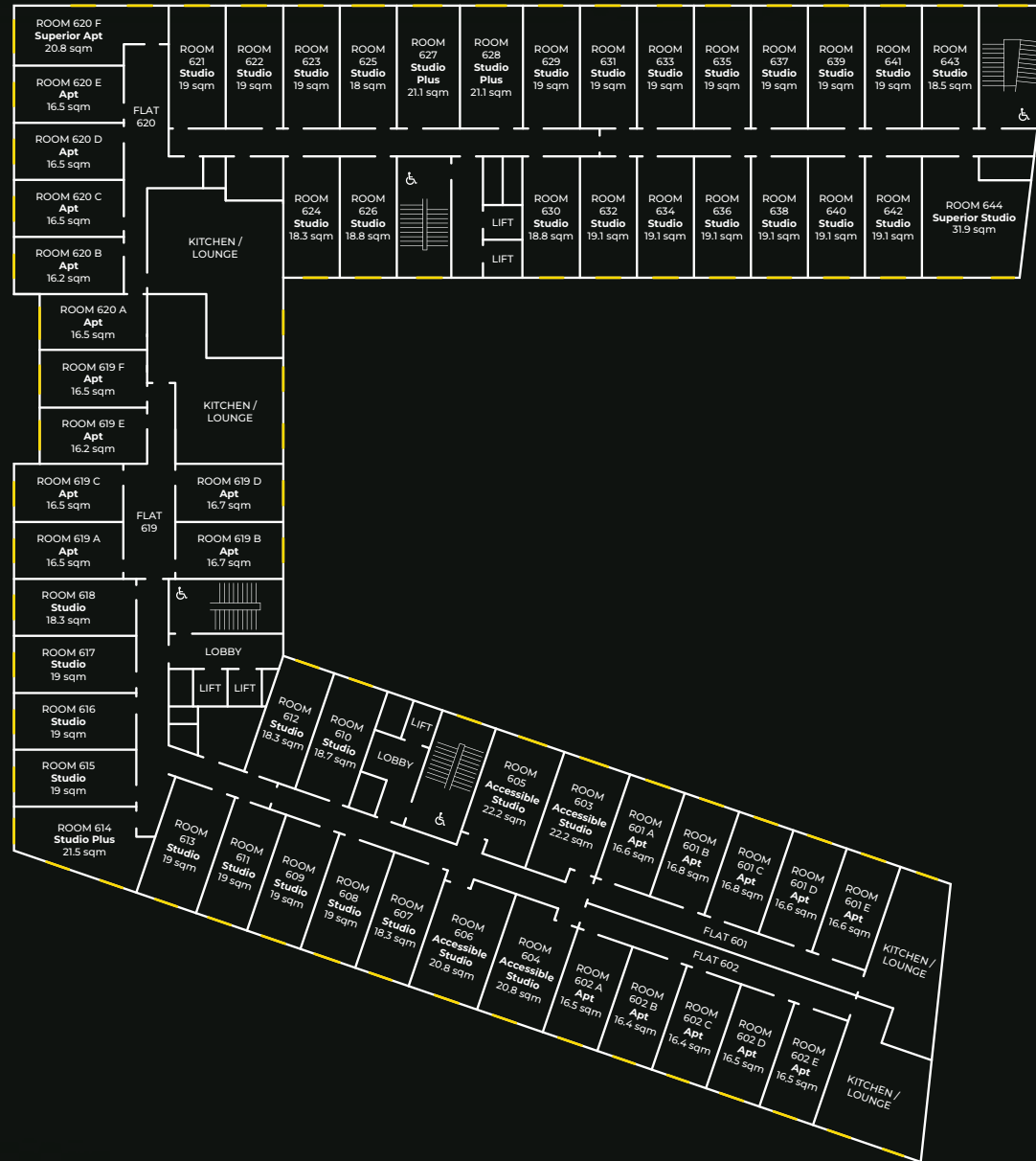
LEVEL 4



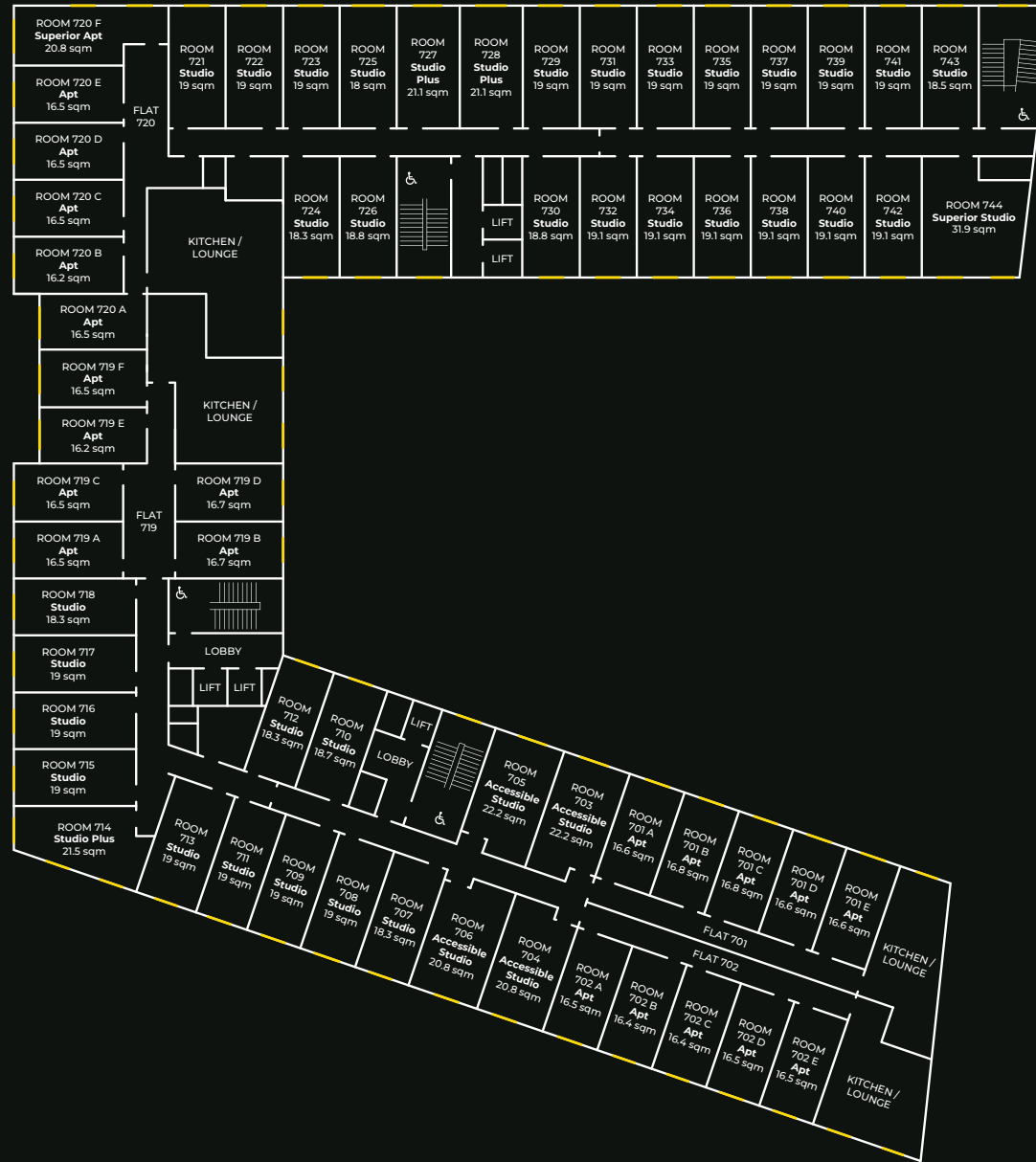
LEVEL 5



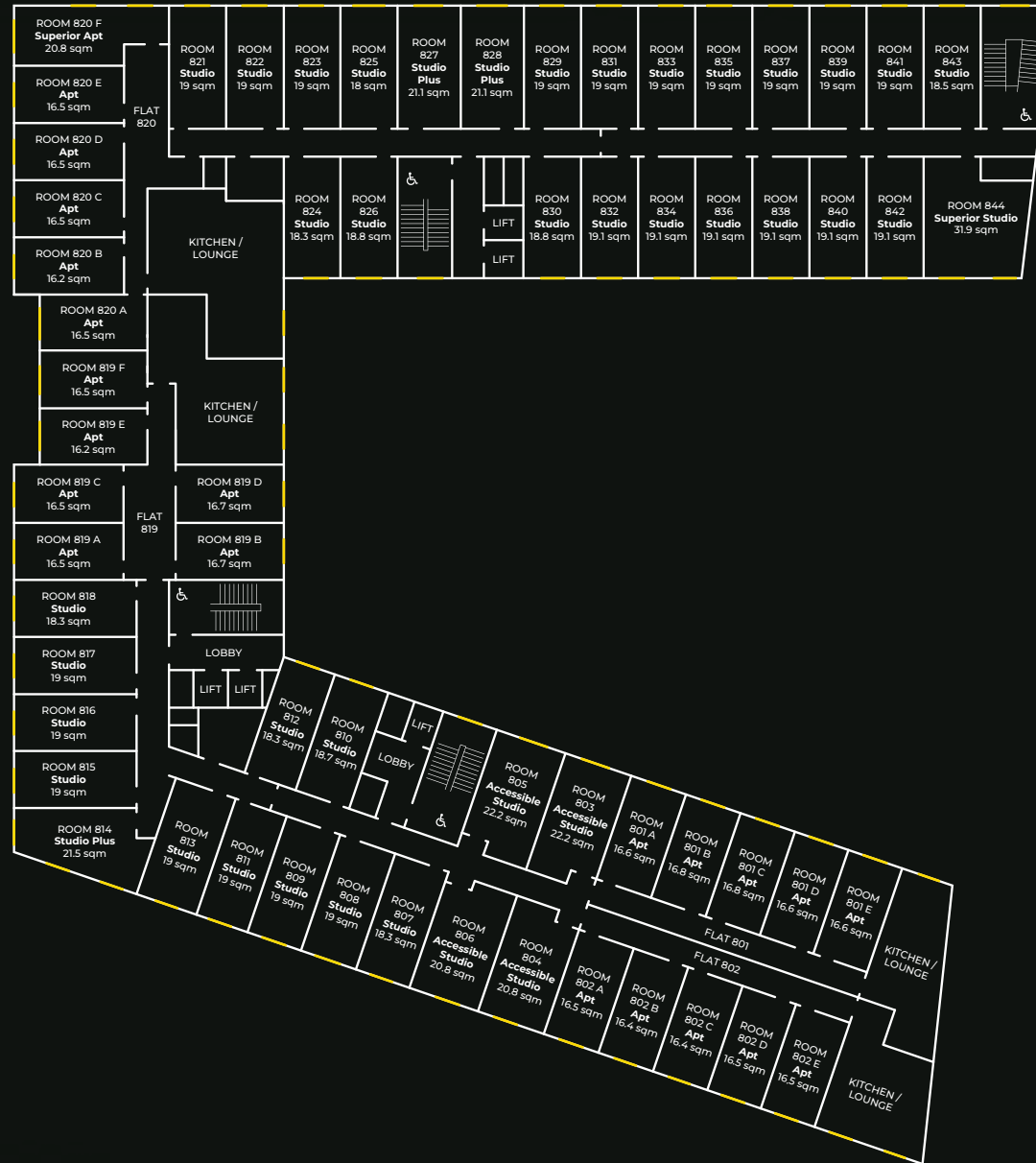
LEVEL 6



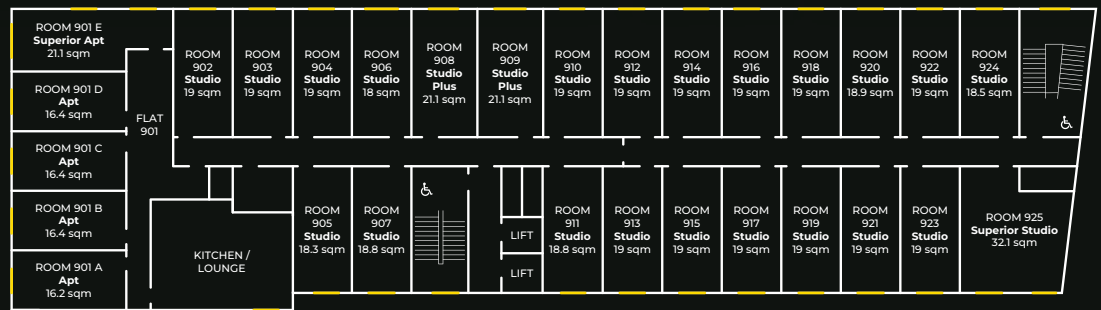
LEVEL 7



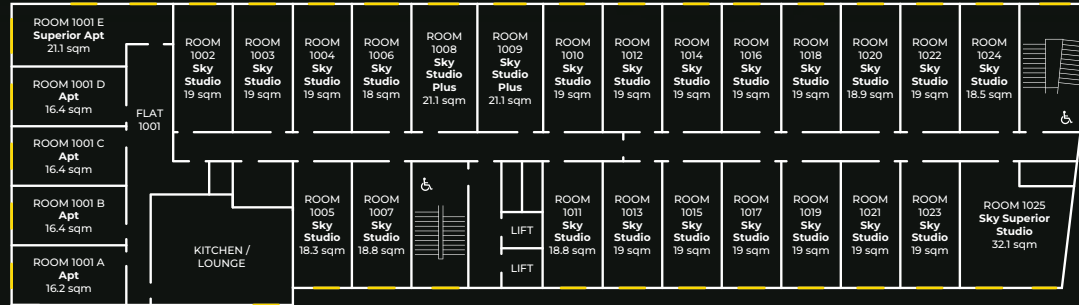
LEVEL 8



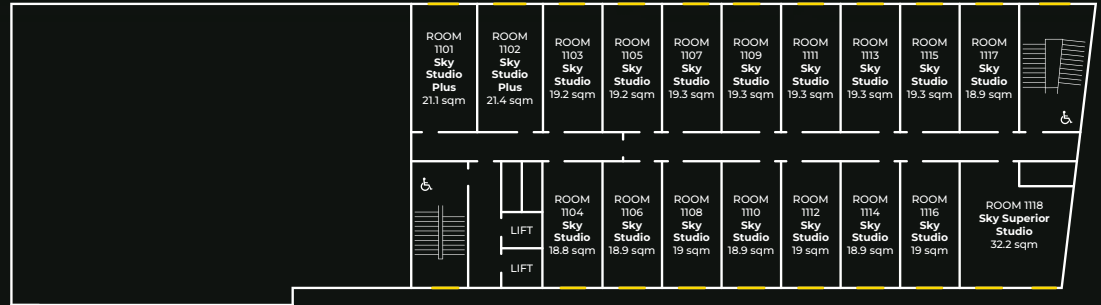
LEVEL 9



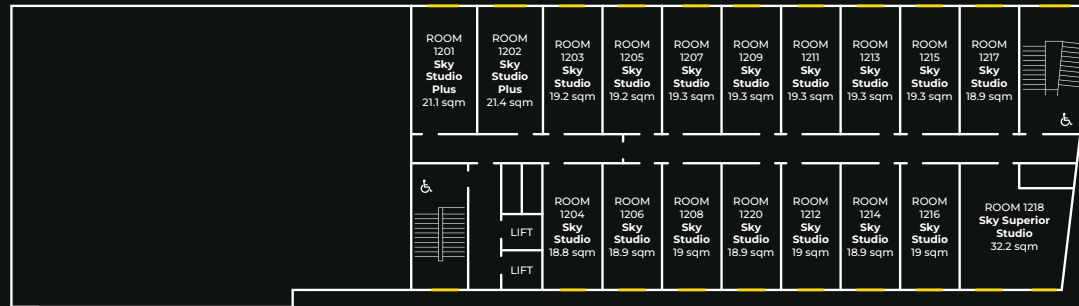
LEVEL 10



LEVEL 11



LEVEL 12

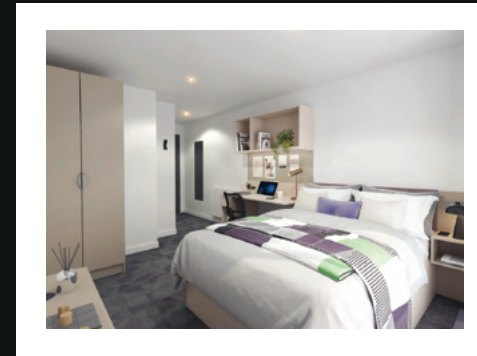




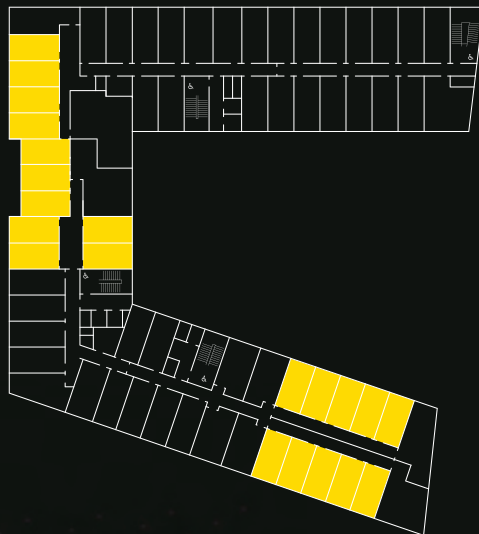
APARTMENTS

**true
APARTMENT**

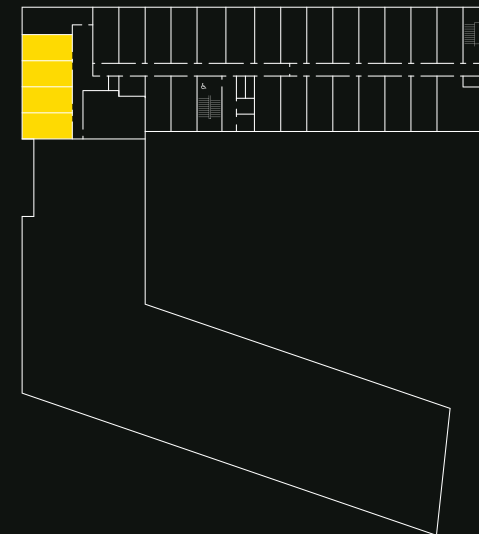
**Apartment size
16.2 - 16.8m²**



LEVEL UG - 8

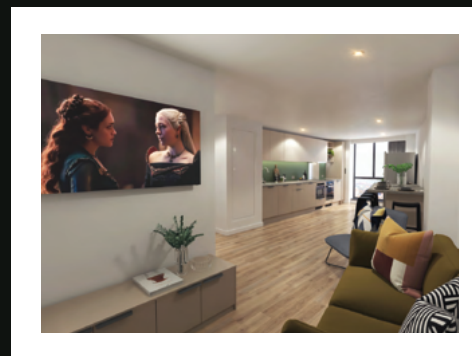
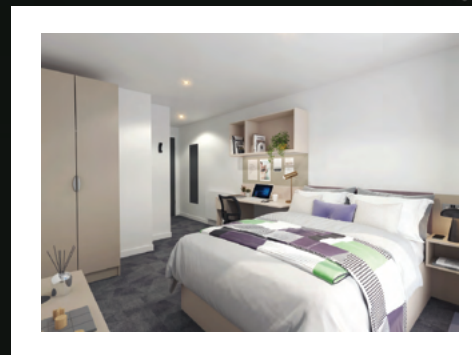


LEVEL 9 - 10

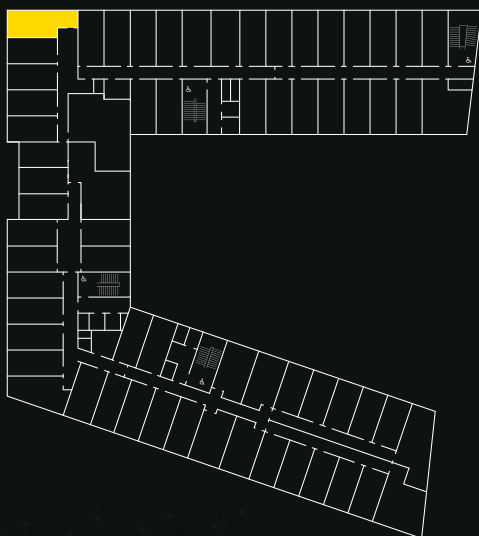


**true
SUPERIOR
APARTMENT**

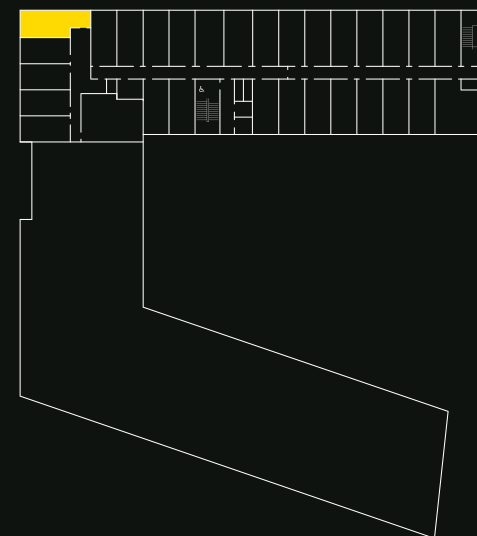
**Apartment size
20.8 - 21.1m²**



LEVEL UG - 8



LEVEL 9 - 10





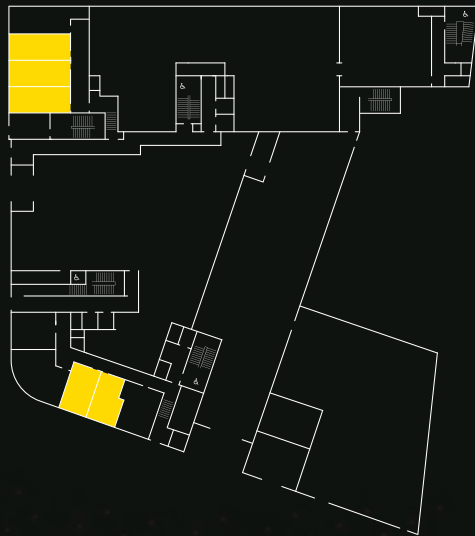
STUDIOS

true
STUDIO

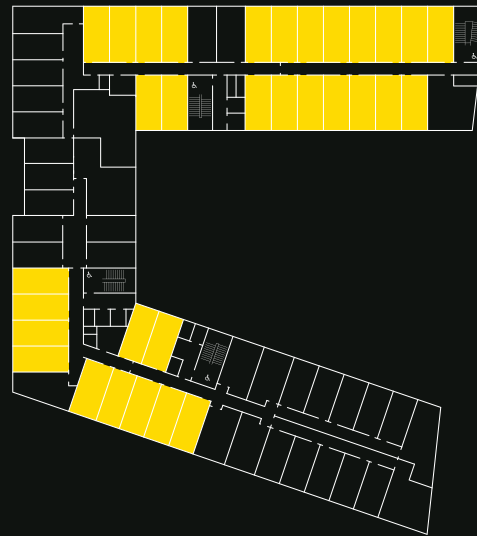
Studio size
18 - 20.4m²



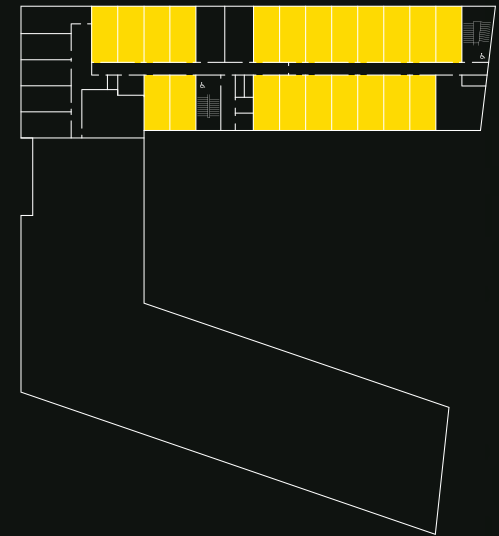
LEVEL G



LEVEL UG - 8



LEVEL 9

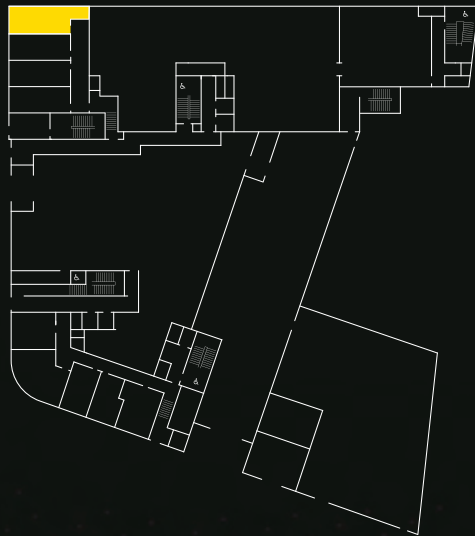


true
STUDIO PLUS

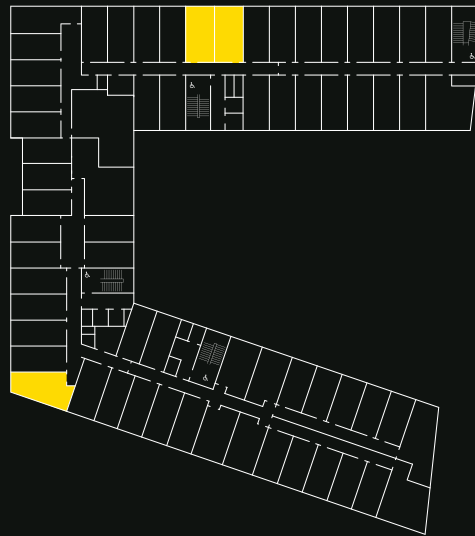
Studio size
21.1 - 22.7m²



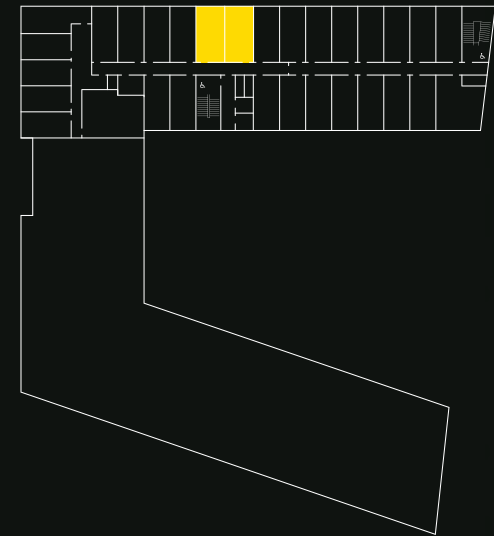
LEVEL G



LEVEL UG - 8



LEVEL 9



**true
SUPERIOR
STUDIO**

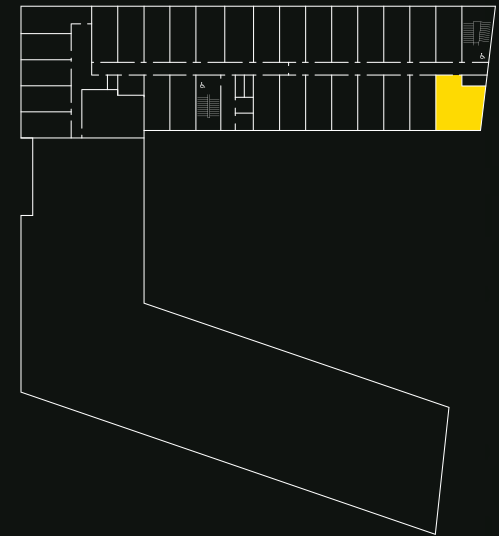
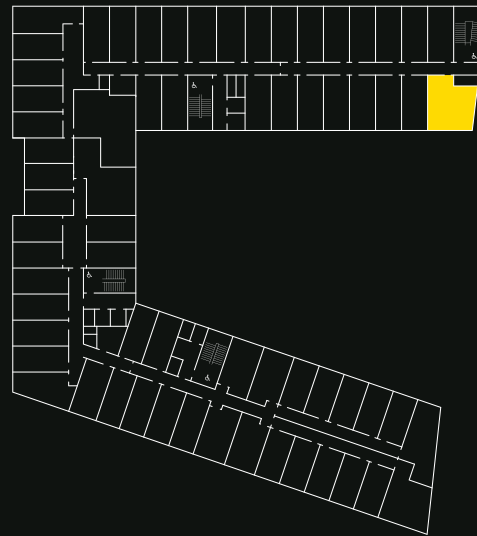
**Studio size
24.2 - 32.7m²**



LEVEL G

LEVEL UG - 8

LEVEL 9

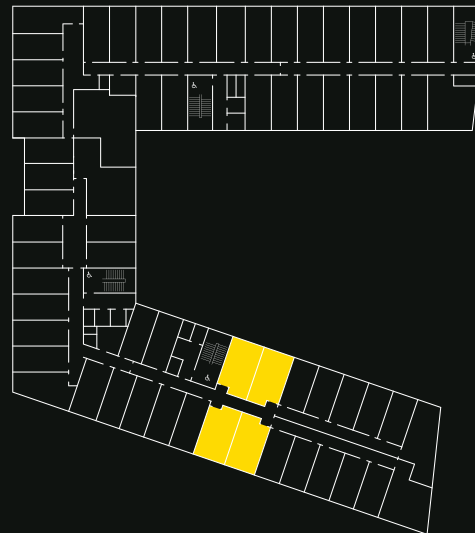


true
ACCESSIBLE
STUDIO

Studio size
20.8 - 22.2m²



LEVEL UG - 8

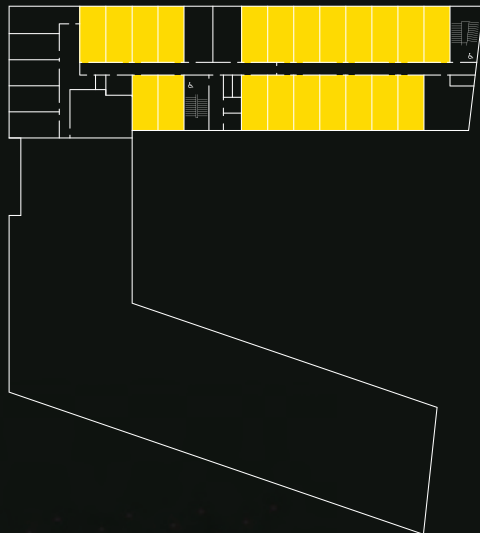


true
SKY STUDIO

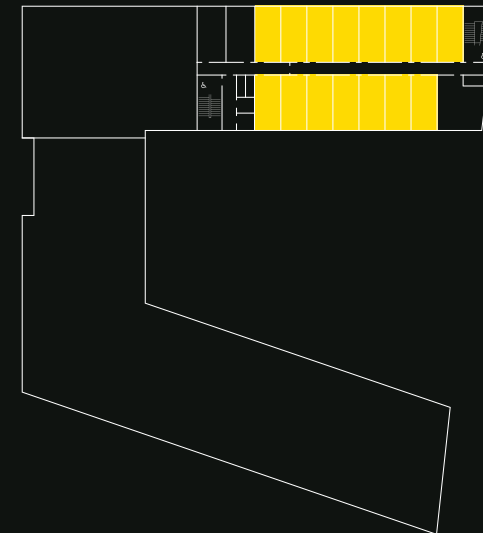
Studio size
18 - 19.3m²



LEVEL 10



LEVEL 11 - 12

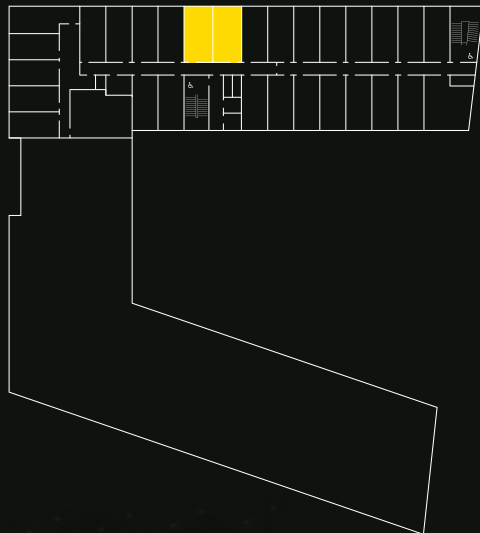


true
SKY STUDIO
PLUS

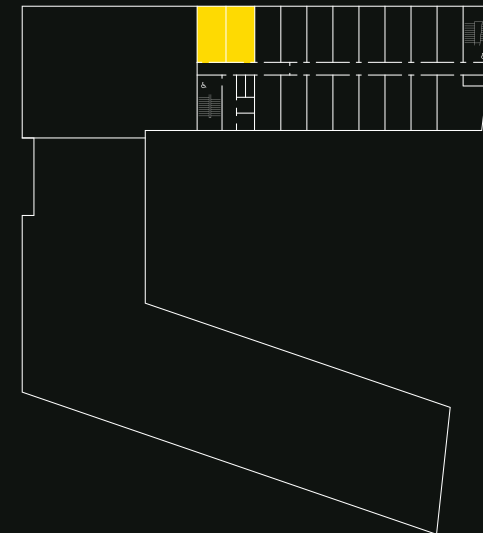
Studio size
21.1 - 21.4m²



LEVEL 10



LEVEL 11 - 12

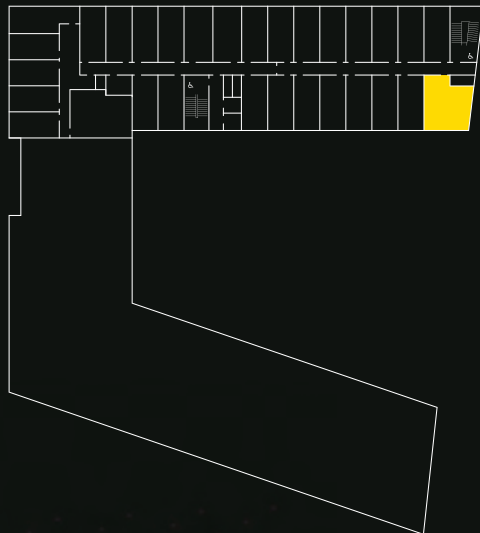


**true
SKY SUPERIOR
STUDIO**

**Studio size
32.1 - 32.2m²**



LEVEL 10



LEVEL 11 - 12

